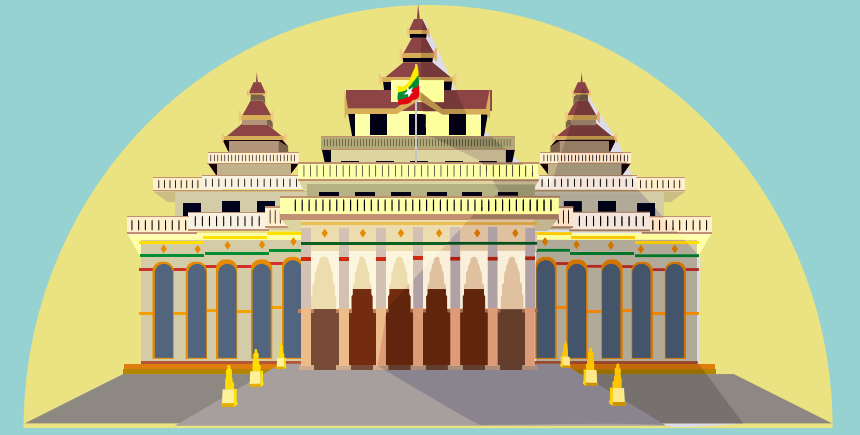


# COMPOSITION OF THE HLUTTAW

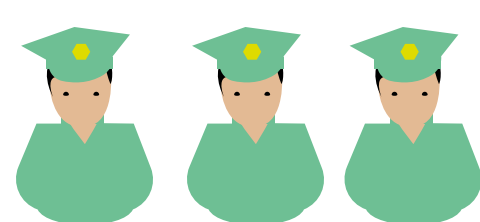
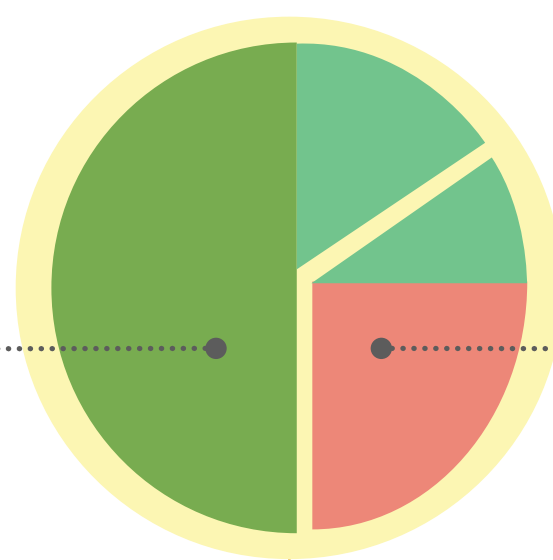


The Republic of the Union of Myanmar  
Hluttaw

Representatives for Pyithu Hluttaw and Amyotha Hluttaw selected every five years through nationwide general elections. One term of Hluttaw is five years from the day of the first session of Pyithu Hluttaw.

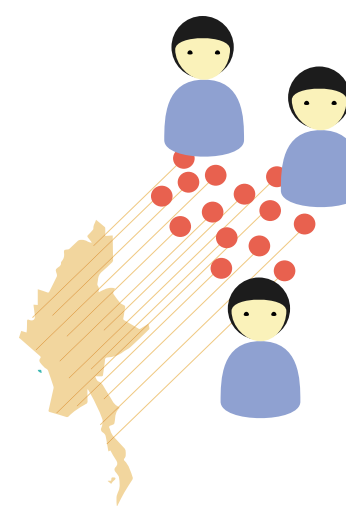
**440**  
**PYITHU HLUTTAW**  
MEMBERS OR  
REPRESENTATIVES

**224**  
**AMYOTHA HLUTTAW**  
MEMBERS

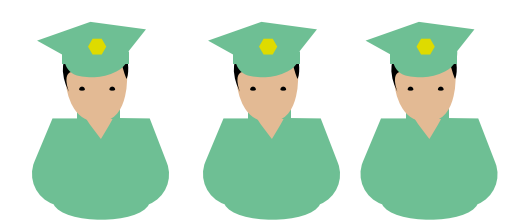


Based on townships and populations, **330 Pyithu Hluttaw representatives** are elected.

**110 defence services personnel** are nominated by the Commander-in-Chief in accordance with the law.



12 representatives from each regions and state, **168 representatives are selected**



**56 defence services personnel** are nominated by the Commander-in-Chief in accordance with the law.

## FUNCTIONS OF THE HLUTTAWS



**ELECTING**  
the Speakers and Deputy Speakers of Hluttaw, the President and Vice-Presidents



**REPRESENTING PEOPLE**  
“People’s Voice, Hluttaw’s Voice, People’s Will, Hluttaw’s Will, People’s Expectation, Hluttaw’s Implementation.”



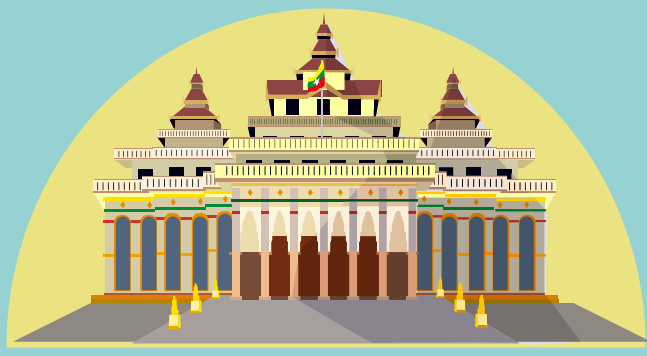
**LAW MAKING**  
The Hluttaw discusses and enacts laws to ensure the safety and development of the people



**CHECKING AND BALANCING**  
the Executive and Judiciary

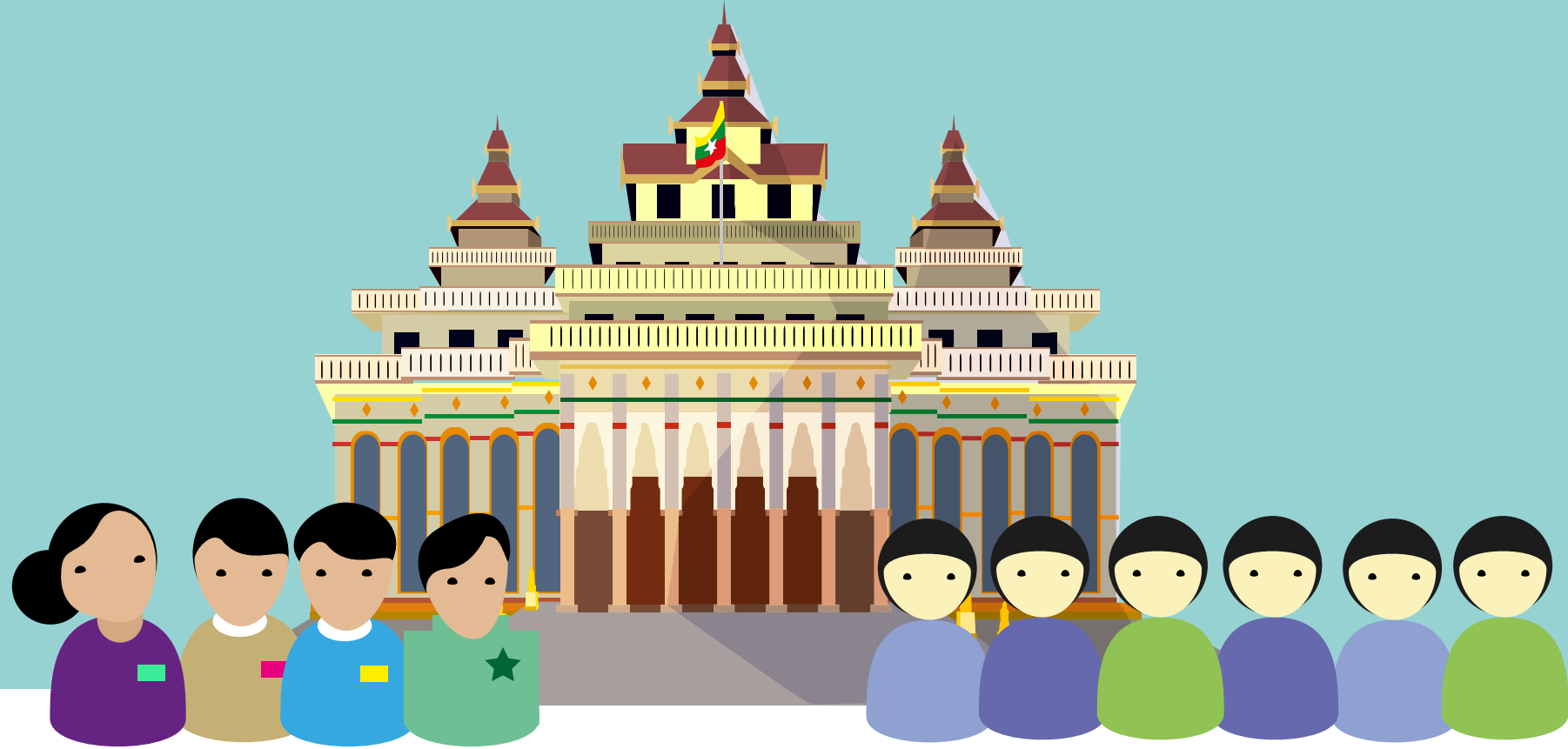
## HLUTTAW

The project to develop this Map was supported by the Hanns Seidel Foundation, the German Bundestag and Bundesrat. Financial support was provided by the Foreign Ministry of Germany (Auswärtiges Amt). All rights, including the right of reproduction, dissemination and translation, reserved. The copyrights of this publication is held by Amyotha Hluttaw, Pyithu Hluttaw and Pyidaungsu Hluttaw, the Republic of the Union of Myanmar.



The Republic of the Union of Myanmar  
Hluttaw

# HLUTTAW REPRESENTATIVES

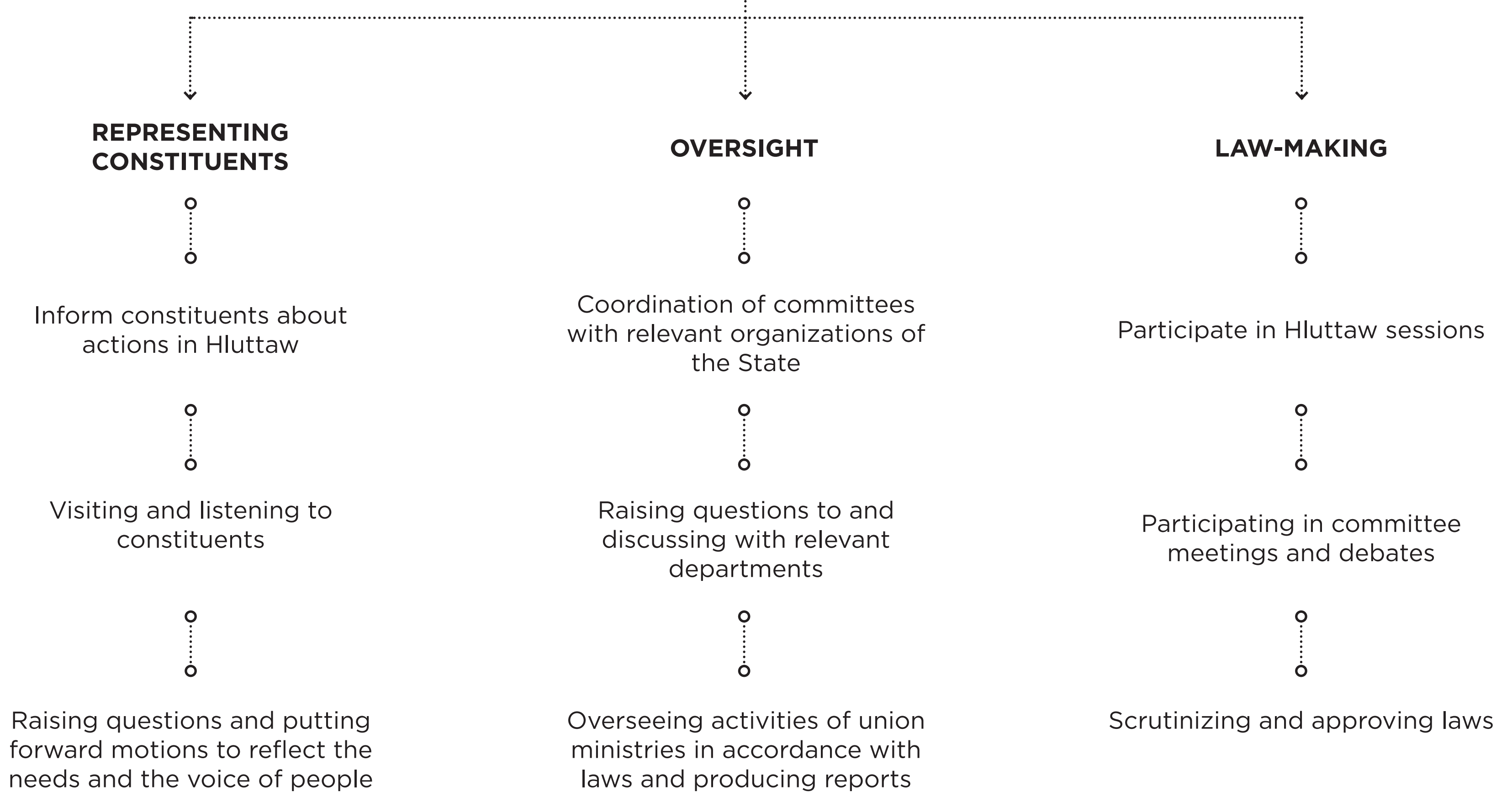


## 440

**PYITHU HLUTTAW**  
REPRESENTATIVES

## 224

**AMYOTHA HLUTTAW**  
REPRESENTATIVE



### Public Participation

The Hluttaws are actively engaged in activities to increase public participation. Constituents can do the following examples to participate.



Visiting Hluttaw



Communicating with Representatives about the needs in the constituencies



Visiting Hluttaw Plenary session & consulting with Hluttaw Committees



Providing feedback regarding the bills being discussed in parliaments

### HLUTTAW

The project to develop this Map was supported by the Hanns Seidel Foundation, the German Bundestag and Bundesrat. Financial support was provided by the Foreign Ministry of Germany (Auswärtiges Amt). All rights, including the right of reproduction, dissemination and translation, reserved. The copyrights of this publication is held by Amyotha Hluttaw, Pyithu Hluttaw and Pyidaungsu Hluttaw, the Republic of the Union of Myanmar.